

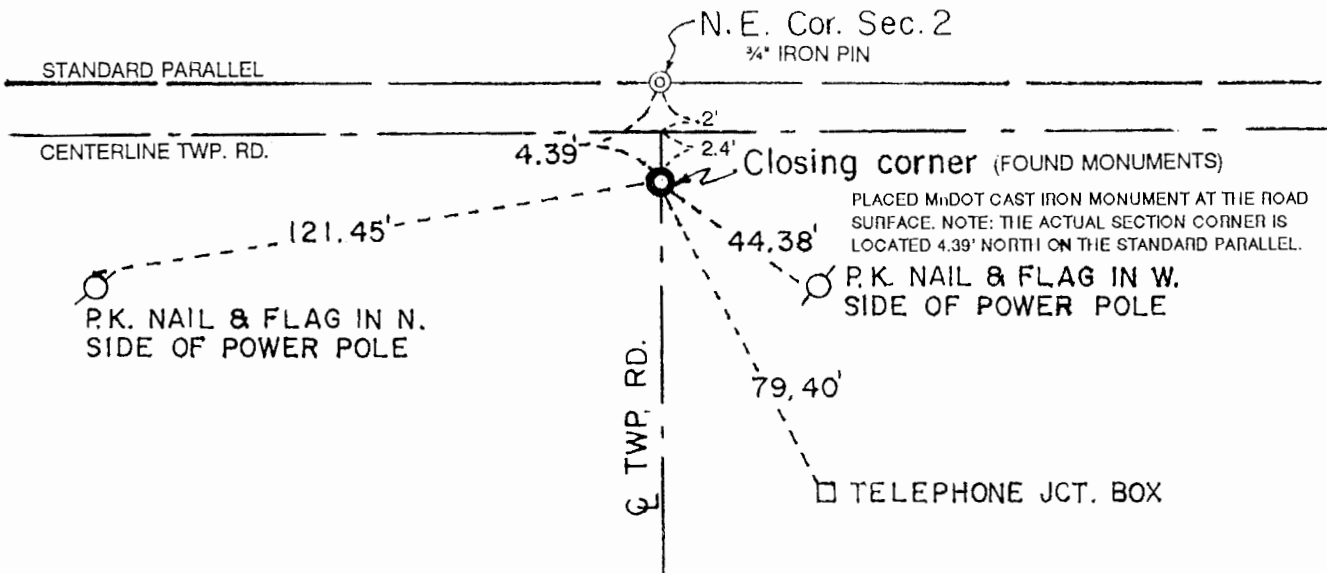
CERTIFICATE OF LOCATION OF GOVERNMENT CORNER

Northeast Corner of Section **2** , Township **108** , Range **41** 5th P.M.
STATE OF MINNESOTA, County of Murray.

Statement: May 25, 1989 - Found 2 stones, 2 wooden stakes, 1/2 inch x 24 inch iron rod, and a piece of chain. Lowered the monuments and placed a Minnesota Department of Transportation Cast Iron Monument near the road surface.



SKETCH OF REFERENCE TIES



Statement of evidence relative to this corner location is on the back of page.

I hereby certify that this document and the data contained herein was prepared by me or under my direct supervision and that I am a duly Registered Land Surveyor under the laws of the State of Minnesota.

Duane A. Bonnema

Duane A. Bonnema

2-25-91

Date

Minnesota Registration No. 14895

OFFICE OF THE COUNTY RECORDER
COUNTY OF MURRAY **MAR 1 1 1991**

I hereby certify that this document was filed in the County Recorder's office at ___ M. on the ___ day of _____ A.D., 19__

County Recorder *James V. Johnson*

By _____, Deputy

DOCUMENT NO. _____

Northeast Cor. Sec. 2 T108N-R41W

Statement:

Sept. 1856

Original Government Land Office Surveyor L. G. M. Fletcher records in his field notes, "Built mound with trench pits, charred stake, per instructions."

Oct. 12, 1897

J. W. Woolstencroft, County Surveyor, records in the County Surveyor's Record Book, page 66, "Government Mound", while he was doing survey work in Section 1.

May 25, 1989

Duane A. Bonnema, LS Reg. No. 14895, found a 10 inch x 8 inch x 8 inch limestone, 2 wooden stakes and an 18 inch long piece of chain 24 inches below the road surface. Also found a 24 inch x 1/2 inch rod with a 1 inch square head alongside of a 19 inch x 14 inch x 12 inch stone 40 inches below the road surface. No additional evidence was discovered. A Minnesota Department of Transportation Cast Iron Monument was placed at the Corner near the road surface.